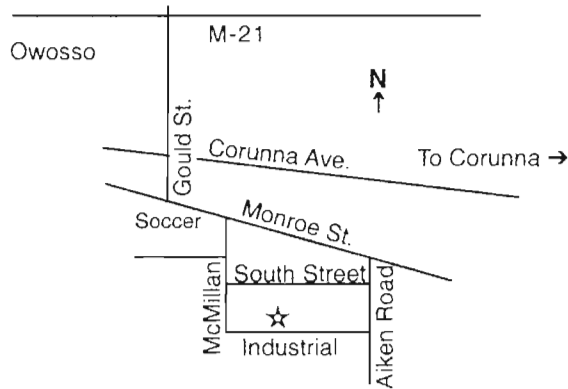


1555 Industrial Ave.
Owosso, MI 48867
989 723-6791
800 622-4514 TTY

Our mission is to provide individualized behavioral healthcare services to members of the community to assist them in improving and maintaining quality of life by reaching their personal goals.



M-21 to Gould Street South
Left/east on Monroe
Right/south on McMillan
Left/east on Industrial

Shiawassee County Community Mental Health Authority is a public agency. We are privileged to serve Shiawassee County by providing public mental health services to adults with serious mental illness, children with serious emotional disturbances and persons with developmental disabilities. We believe people are interdependent and equal citizens regardless of ability or disability; thus, we encourage not just our service providers, but all citizens, to help individuals with disabilities develop opportunities for supportive reciprocal relationships within the community.

Help is immediately available from professional staff 24 hours a day, seven days a week by calling:

989 723-6791 V/TTY
or **800-622-4514**

Shiawassee County Community Mental Health Authority receives funds from the Michigan Department of Community Health, Bay Arenac Behavioral Health Authority and Shiawassee County.



SHIAWASSEE
COUNTY
COMMUNITY
**Mental Health
Authority**



989-723-6791

800 622-4514 TTY

*Together we can make
a difference*

www.shiacmh.org

Together we can make a difference

Getting help at the earliest possible time is key to feeling better and possibly preventing mental illness altogether.

For help with depression, anxiety, life transitions, teen conflicts, childhood behavioral problems, relationship issues, traumatic events. Call for information.

Sometimes you may feel tomorrow can be no different from today and may be worse.

Mental illnesses are successfully treated at a higher rate than many other chronic illnesses.

Together we can assess the problem and develop a plan.



Recovery is an individual journey that follows different paths and leads to different locations. Utilizing the person-centered planning process our agency offers a wide variety of treatments and support services to assist each individual finding their way to a meaningful life in the community.

Staff at SCCMHA believe that people can take charge of the present and make the future different from the past. Our goal is to help people define and find the changes they really want to work toward and then help them get on track, moving toward tomorrow.

Together we can decide on solutions that are right for you. ***Everyone is unique!*** Whether you are dealing with a Developmental Disability or a Mental Illness, together we can design a program to assist you.

It starts with a phone call!

Staff will help you make an appointment to speak with a professional therapist who will listen and discuss service choices available to you. Some choices may be outpatient therapy, meeting with a psychiatrist, case manager, or others.

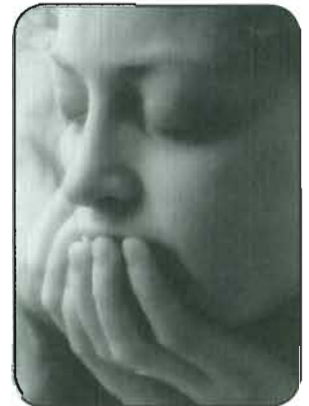
Referrals are made to other community agencies when needed. You can make an appointment by calling:

989 723-6791 V/TTY

When a person is in crisis, help is immediately available from professional staff 24 hours a day, seven days a week.

Crisis assistance is available by calling

989 723-6791 V/TTY
or 800 622-4514



Anyone can have a mental illness, a family member, friend or even you.

Mental health wellness is important.